



# Roxtec Dichtung RS Ex mit SLF RS

Für explosionsgefährdete Bereiche zugelassene Abdichtung zum Verschrauben für ein Einzelkabel oder -rohr.

Roxtec RS Ex mit SLF RS ist eine Abdichtung mit Zulassung für Ex e- und Ex tb-Bereiche. Sie hat ein Metallmantelrohr und ist auf Einzelkabel und -rohre ausgelegt. Die Einführungsdichtung besteht aus zwei Hälften mit entfernbaren Schichten für die Anpassung an verschiedene Kabel- und Rohrgrößen. Das Mantelrohr wird mit dem Baukörper verschraubt.



- Beständig gegen Nagetierverbiss
- Schnelle und einfache Installation

## Produkteigenschaften



Feuerhemmend



Wasserdicht



Gasdicht



Ex- zertifiziert

## Aufbau der Installation



Sandwichkonstruktion



Metall



Gips



Beton

## Montagetyp



Verschrauben

## Klassifizierungen und Zertifikate

### Feuer

- KLASSE A gemäß IMO 2010 FTP Code
- E/EI-Klassifizierung gemäß EN 13501
- F/T-Klassifizierung gemäß UL 1479
- KLASSE H gemäß IMO 2010 FTP Code + HC-Brandlastkurve
- Feuerstrahlen gemäß ISO 22899-1 und OTI 95634

### Dichtigkeit

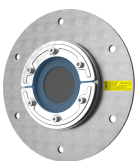
- Gas: 2,67 Bar (Katastrophenfall)
- Wasser: 4 bar (Katastrophenfall)

### Belege

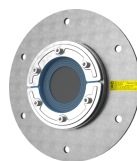
- Ex- zertifiziert

## Daten der Abdichtungskomponenten

### Dichtkomponenten



Roxtec-Kit RS B ES Ex



Roxtec-Kit RS B PE Ex



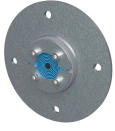
Roxtec-Kit RS B Ex

Weitere Informationen finden Sie unter [www.roxtec.com](https://www.roxtec.com).

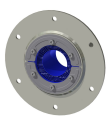


# Vorkonfigurierte Durchführungs-Kits

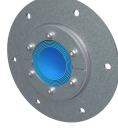
mm/kg



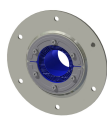
RS 50 B Ex  
AISI316/GALV



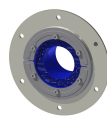
RS 100 B Ex AISI316  
WOC/PRIMED



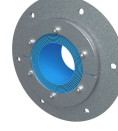
RS 100 B Ex AISI316  
WOC/GALV



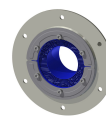
RS 100 B Ex AISI316  
WOC/AISI316



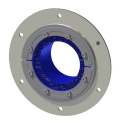
RS 125 B Ex AISI316  
WOC/PRIMED



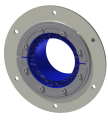
RS 125 B Ex AISI316  
WOC/GALV



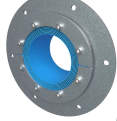
RS 125 B Ex AISI316  
WOC/AISI316



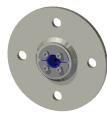
RS 150 B Ex AISI316  
WOC/AISI316



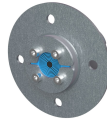
RS 150 B Ex AISI316  
WOC/PRIMED



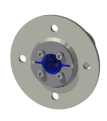
RS 150 B Ex AISI316  
WOC/GALV



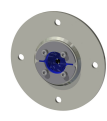
RS 25 B Ex  
AISI316/AISI316



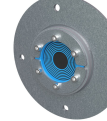
RS 43 B Ex  
AISI316/GALV



RS 43 B Ex  
AISI316/AISI316



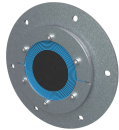
RS 50 B Ex  
AISI316/AISI316



RS 75 B Ex  
AISI316/GALV



RS 75 B Ex  
AISI316/AISI316



RS 125 B Ex  
AISI316/GALV

Title	Konfiguration	Öffnungsmaße Ø	Gewicht	Art. Nr.
RS 50 B Ex AISI316/GALV		65 - 65	1.4	101918
RS 125 B Ex AISI316/AISI316		142 - 142	3.9	163616
RS 100 B Ex AISI316 WOC/PRIMED	1x (48.0-70.0)	116 - 116	2.9	EXRSB0100102112
RS 100 B Ex AISI316 WOC/GALV		116 - 116	2.9	EXRSB0100102118
RS 100 B Ex AISI316 WOC/AISI316	1x (48.0-70.0)	116 - 116	2.7	EXRSB0100102121
RS 125 B Ex AISI316 WOC/PRIMED	1x (66.0-98.0)	142 - 142	3.4	EXRSB0125102112
RS 125 B Ex AISI316 WOC/GALV		142 - 142	3.6	EXRSB0125102118
RS 125 B Ex AISI316 WOC/AISI316	1x (66.0-98.0)	142 - 142	3.6	EXRSB0125102121
RS 150 B Ex AISI316 WOC/AISI316	1x (93.0-119.0)	166 - 166	4.1	EXRSB0150002121
RS 150 B Ex AISI316 WOC/PRIMED	1x (93.0-119.0)	166 - 166	4.2	EXRSB0150102112
RS 150 B Ex AISI316 WOC/GALV		166 - 166	4.5	EXRSB0150102118
RS 25 B Ex AISI316/GALV		36 - 36	0.43	EXRSB0250002118
RS 25 B Ex AISI316/AISI316	1x (3.6-12.0)		0.48	EXRSB0250002121
RS 43 B Ex AISI316/GALV		54 - 54	0.9	EXRSB0430002118
RS 43 B Ex AISI316/AISI316	1x (4.0-23.0)	54 - 54	0.9	EXRSB0430002121
RS 50 B Ex AISI316/AISI316	1x (8.0-30.0)	65 - 65	1.4	EXRSB0500002121
RS 75 B Ex AISI316/GALV		91 - 91	2	EXRSB0750002118
RS 75 B Ex AISI316/AISI316	1x (24.0-54.0)	91 - 91	2.1	EXRSB0750002121
RS 100 B Ex AISI316/GALV		116 - 116	3	EXRSB1000002118
RS 100 B Ex AISI316/AISI316		116 - 116	4.4	EXRSB1000002121
RS 125 B Ex AISI316/GALV		142 - 142	4.3	EXRSB1250002118



The product information provided by Roxtec does not release the purchaser of the Roxtec system, or part thereof, from the obligation to independently determine the suitability of the products for the intended process, installation and/or use.

Roxtec gives no guarantee for the Roxtec system or any part thereof and assumes no liability for any loss or damage whatsoever, whether direct, indirect, consequential, loss of profit or otherwise, occurred or caused by the Roxtec systems or installations containing components not manufactured by an authorized manufacturer and/or occurred or caused by the use of the Roxtec system in a manner or for an application other than for which the Roxtec system was designed or intended.

Roxtec expressly excludes any implied warranties of merchantability and fitness for a particular purpose and all other express or implied representations and warranties provided by statute or common law. User determines suitability of the Roxtec system for intended use and assumes all risk and liability in connection therewith. In no event shall Roxtec be liable for indirect, consequential, punitive, special, exemplary or incidental damages or losses.

The Roxtec products are offered and sold in accordance with the conditions of the Roxtec General Terms of Sales. The latest version of the Roxtec General Terms of Sales can be downloaded from <https://www.roxtec.com/en/about-us/about-roxtec/general-terms-of-sales/>

We reserve the right to make changes to the product and technical information without further notice. Any errors in print or entry are no claims for indemnity. The content of this publication is the property of Roxtec International AB and is protected by copyright.

This document was generated on: 2024-04-15